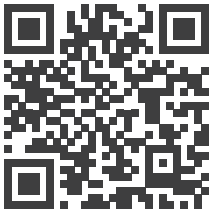


Quick Start Guide

Fronius Smart Meter TS 65A-3



[manuals.fronius.com/
html/4204260349](https://manuals.fronius.com/html/4204260349)

**OPERATING
INSTRUCTION**



| Technical Data - General | |
|---|--|
| Nominal voltage (three-phase) / Operating range | 208 - 400 V / 166,4 - 480 V |
| Nominal frequency / Tolerance | 50 - 60 Hz / 45 - 65 Hz |
| Nominal / Maximum current | 5 A / 65 A |
| Powerfactor range (EN/IEC 62053-21, EN/IEC 62053-23) | aktiv $\cos\phi$ 0.5 ind to 0.8 cap reaktiv $\sin\phi$ 0.5 ind to 0.5 cap |
| Permitted ambient temperature | from -25° to +65°C |
| Mounting | DIN rail 35 mm |
| IP range (EN60529) | IP51 / IP20 (Front / Connections) |

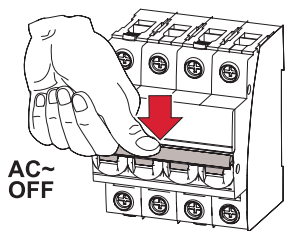
| Communication | |
|----------------------|--|
| Standard | RS485 - 3 conductors |
| Protocol | Modbus RTU |
| Min. Softwareversion | Datamanager 2.0: 3.16.1 / Fronius Symo Hybrid: 1.16.1 / Fronius GEN24: 1.12.1 |

| Screw terminal | |
|--------------------------------|---|
| Measuring input / neutral line | 1 - 16 mm ² |
| Output (data communication) | min. 0,05 mm ² |
| Recommended torque | Measuring input: max. 2,8 Nm Output: max. 0,4 Nm |

Detailed, country-specific warranty terms are available on: www.fronius.com/solar/warranty

AC~

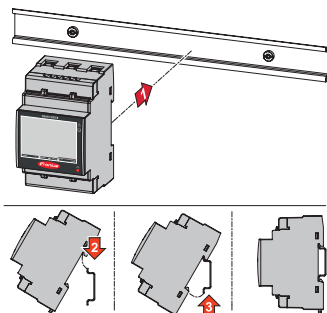
1



AC~ OFF

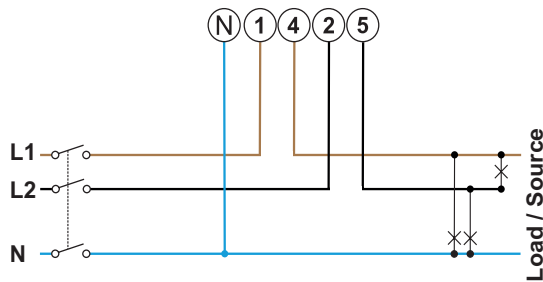
Mounting

2



Power Wiring

3a



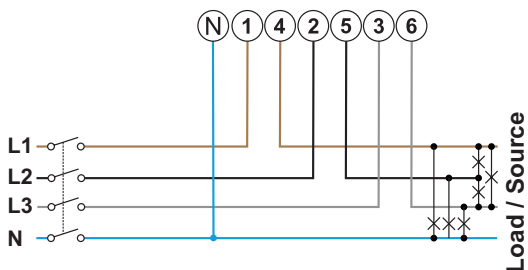
2 Phases, 3 Wires

| CU Wire | |
|---------|----------------------|
| ● | 1-16 mm ² |
| ● | 1-10 mm ² |

| | |
|---|--------|
| ⊕ | 2,8 Nm |
| ⊖ | 0,4 Nm |

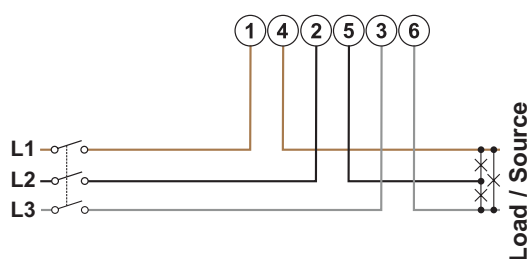
| | In | Out |
|----|----|-----|
| L1 | 1 | 4 |
| L2 | 2 | 5 |
| L3 | 3 | 6 |
| N | N | N |

3b



3 Phases, 4 Wires

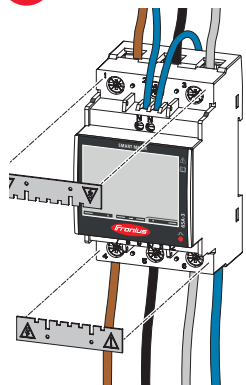
3c



3 Phases, 3 Wires

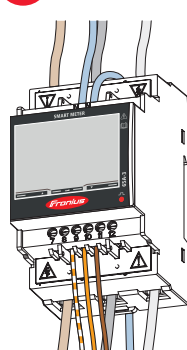
Protective Covers

4



Data Wiring

5



CU Wire
(min CAT5)
≥0,05 mm²

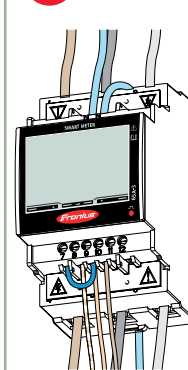
⊖
0,4 Nm

| SnapInverter | Smart Meter | | Modbus | |
|--------------|-------------|---|--------|---|
| | 8 | 9 | 10 | - |

| GEN24 | Smart Meter | | Modbus | |
|-------|-------------|---|--------|-----|
| | 8 | 9 | 10 | GND |

Terminating Resistor

6



CU Wire
≥0,05 mm²

⊖
0,4 Nm

| Bypass (cable) | | |
|----------------|---|----|
| | T | M- |
| ■ | 7 | 9 |

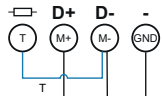
7



Manufacturer manual



Manufacturer manual



Smart Meter

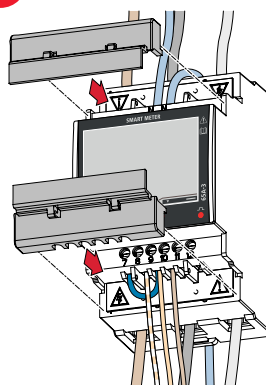
e. g. Ohmpilot, Battery

Inverter

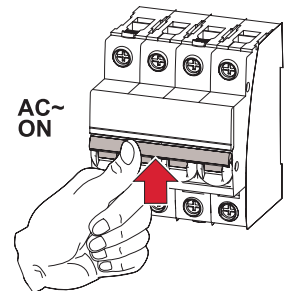
max. 300 m

Close & Commissioning

8

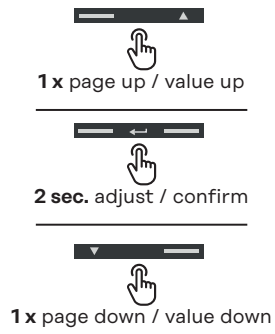


9

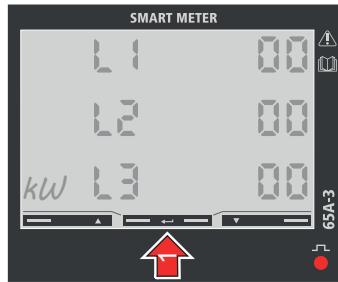


AC~ ON

10

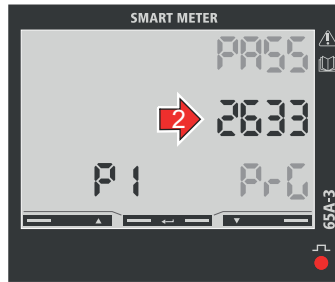


11



12

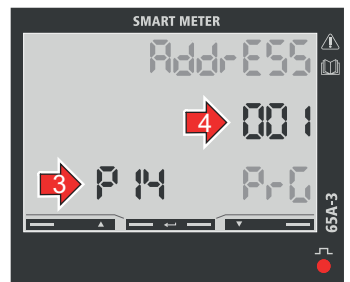
Password



Factory default: **2633**

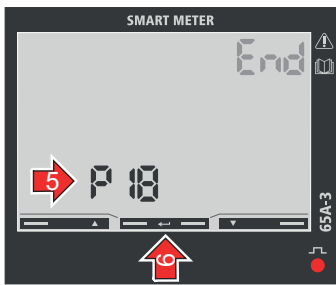
13

Modbus Address



Factory default: **001**

14



Exit

15

